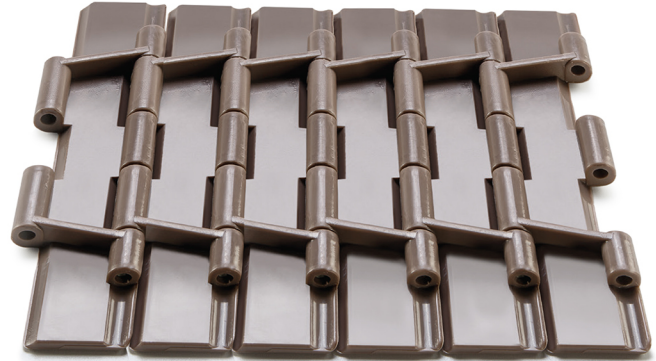
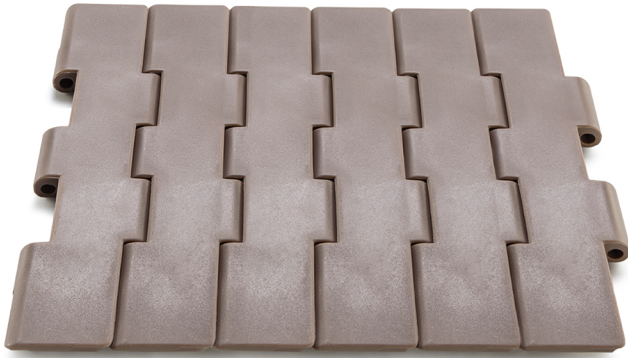


# MD 821 Chain Series

Straight Running-Double Hinge Chains



## MD 821 Technical Information

MD 821 SERIES STRAIGHT RUNNING - DOUBLE HINGE CHAINS

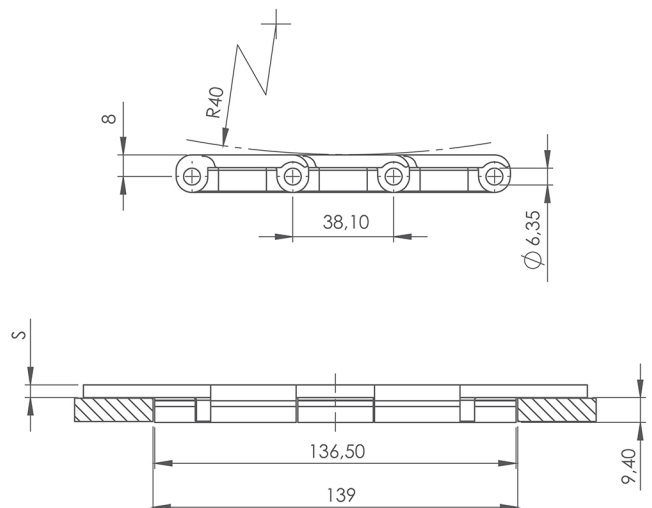
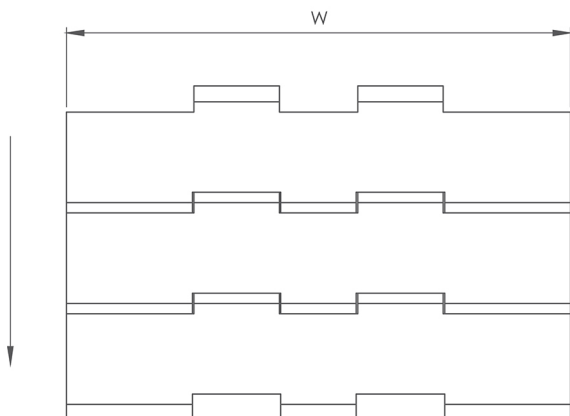
PRODUCT CODE	WIDTH ( W )		PLATE THICKNESS ( S )	TENSILE STRENGTH		WEIGHT
	mm	inch		Kg/m	N/m	
MD 821-K750-LF	190,5	7,50	4,8	270	2700	2,70
MD 821-K1000-LF	254,0	10,00	4,8	270	2700	3,10
MD 821-K1200-LF	304,8	12,00	4,8	270	2700	3,40

\* Self-lubricating low friction acetal resin, brown-coloured.

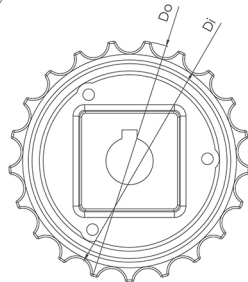
\* Pins in special chrome-nickel 304 stainless steel

\* Standard packing lengths = 80 pitches= 3,048 m

## MD 821 Technical Drawings



## MD 820 Sprockets Technical Drawings

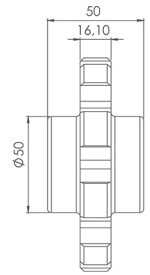
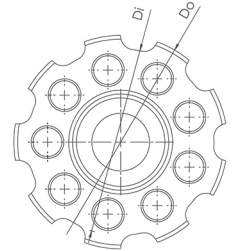


Classic Sprocket Series MD820

Product Code	Number of Teeth	Do (mm)	Di (mm)	Round Bore (Ø)
MD 820	21	128	114	25 30
MD 820	25	152	138	25 30

\* Special sprockets and hub size are being manufactured on your request.

## MD 880 Sprockets Technical Drawings

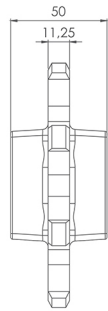
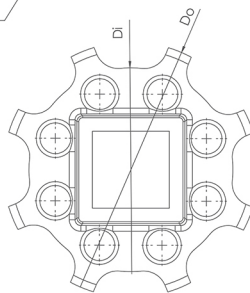
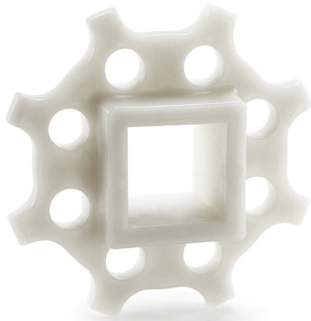


Classic Sprocket Series MD880

Product Code	Number of Teeth	Do (mm)	Di (mm)	Round Bore (Ø)
MD 880	9	111	97	25 30
MD 880	11	135	121	25 30

\* Special sprockets and hub size are being manufactured on your request.

## MD 1701 R Sprockets Technical Drawings

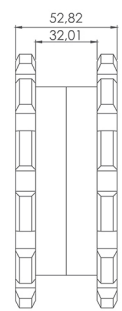
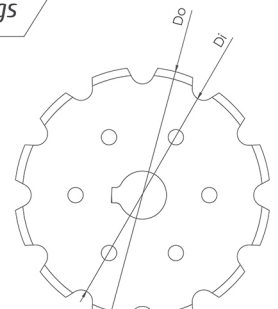


Classic Sprockets Series MD1701

Product Code	Number of Teeth	Do (mm)	Di (mm)	Round Bore (Ø)	Square Bore
MD 1701 R	8	132	107	25 30	40 x 40
MD 1701 R	10	166	107	25 30	40 x 40

\* Special sprockets and hub size are being manufactured on your request.

## Flexi Chains Sprocket Technical Drawings

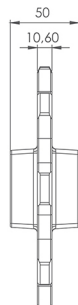
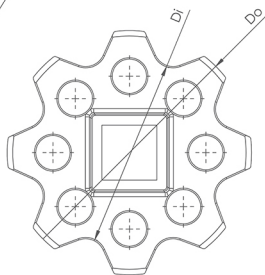
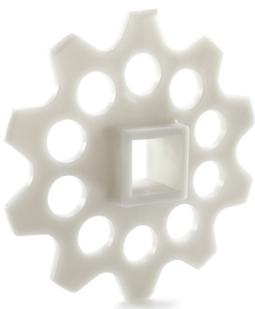


Classic Sprockets Series Flexi Chains

Product Code	Number of Teeth	Do (mm)	Di (mm)	Round Bore (Ø)	Square Bore
FLEXI CHAIN	12	133	115	25 30	40 x 40

\* Special sprockets and hub size are being manufactured on your request.

## MD 600 S Sprockets Technical Drawings



Classic Sprockets Series MD600

Product Code	Number of Teeth	Do (mm)	Di (mm)	Round Bore (Ø)	Square Bore
MD 600	8	177	138	25 30	40 x 40
MD 600	10	221	176	25 30	40 x 40

\* Special sprockets and hub size are being manufactured on your request.